

EVENING DRESS OF THE EARLY JAZZ AGE

Descriptions and back views of patterns pictured on the opposite page.

3355—The season's favorite evening gown has straight lines and the uneven hem. In this frock the silhouette has been softened by a single cascade at one side and the waist, in keeping with the soft lines, blouses just a little at the low line. It is a one-piece model that can be made for evening wear or for day wear, and the blouse body lining, which can be cut with a camisole top, can be used. Use silk crêpe fabrics such as Canton crêpe, Marocain crêpe or broche crêpe; or use crêpe back satin, crêpe de Chine, crêpe meteor or chiffon velvet. A 36 bust requires 3 1/8 yards of velvet 40 inches wide and 3/8 yard of silver cloth 36 inches wide. Lower edge 1 1/2 yard. This dress is suitable for ladies 32 to 44 bust; it is also nice for misses.

2690—10905—Absolute simplicity of line and extreme richness of trimming combine into a charming evening frock. This dress can also be made with a great sash or loose plaited panels. It is a one-piece dress and the use of the blouse body lining, which can be cut with a camisole top, is optional. A scroll-like sprig or leaves is a delightful motif for trimming. It is worked with beads. Use satin, taffeta, velvet, brocade, charmeuse or crêpe meteor with sashes or panels of tulle or net; or use taffeta, satin, crêpe meteor, crêpe de Chine or velvet alone. Sashes of taffeta, ribbon or velvet can be used on a Georgette dress; or you can make both dress and plaited panels of Georgette, etc. Lower edge 54 inches. A 36 bust requires 3 yards of chiffon 40 inches wide. This dress is becoming to ladies 32 to 46 bust.

3353—Paris has brought forth a frock with a petal skirt which has the characteristic of so many of the new French evening dresses of being made all of one material. The dress is made with a gusset under the arm and a shoulder section can be used. A two-piece slip forms a foundation for the petals of the skirt and is joined to the waist at the low line. The petals hang in the much desired uneven line at the hem. Use silk crêpe fabrics, crêpe

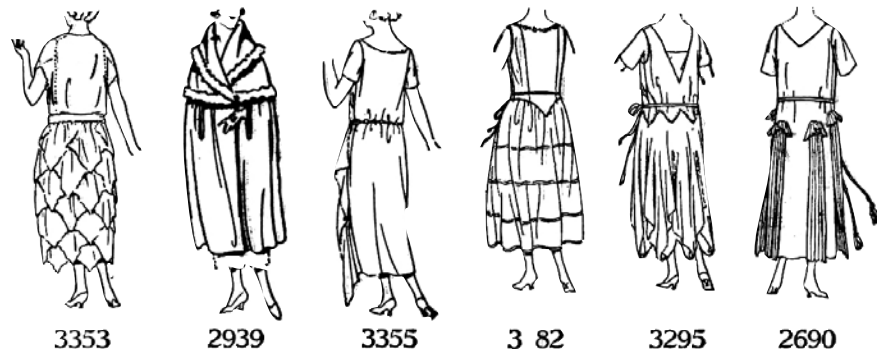
de Chine, crêpe meteor, crêpe back satin or taffeta for the dress, and chiffon, lining China silk or silk mull for the foundation skirt. The picot finish is the only trimming. A 36 bust requires 3 1/4 yards of Canton crêpe 40 inches wide. Lower edge 45 inches. This dress is becoming to ladies 32 to 40 bust.

3182—A Beautiful Spanish shawl, a high Spanish comb and a fan are fitting accessories for an evening frock that recalls the sound of castanets. The flare of the skirt is emphasized by the restraint of the pointed bodice, and the vagrant petals from a rose at the corsage fall softly over the skirt. The skirt has a scalloped edge that gives the lovely uneven line to the hem. It is straight and is joined to the fitted waist at the normal waistline. The dress is made with a French body lining and closes at the left shoulder and underarm. Use Canton crêpe, crêpe meteor, crêpe satin, crêpe de Chine, taffeta or velvet. A 36 bust requires 3 3/4 yards of taffeta 36 inches wide. Lower edge 3 yards. This dress is becoming to ladies 32 to 40 bust.

2939—10872—The success of evening clothes lies in the judgment displayed in the evening wrap. A cape is graceful and will not crush the frock underneath. The straight lower part falls in soft folds from a deep yoke and for further interest there is a great collar. This is a very effective model. Use crêpe de Chine, satin or taffeta or duvetyne in evening colors. By way of trimming there are circle motifs to be placed at points of vantage. They can be worked in a combination of beading and one-stitch embroidery. A 36 bust requires 3 yards of velvet 40 inches wide and 1 yard of fur cloth 50 inches wide. This cape is suitable for ladies 32 to 44 bust; it is also nice for misses.

3295—The narrow silhouette is retained even when Fashion decides upon a four-piece circular tunic. The tunic is soft and falls in a delightfully broken line at the hem,

following the same pointed outline of the long body and skirt joining. The dress is a slip-over model and has a two-piece slip. This is a very elegant frock, yet the picot edge is the only trimming necessary. Though charmingly effective, this lovely dress is very easy to make. Use materials that drape softly such as crêpe de Chine, silk crêpe fabrics, crêpe meteor or crêpe back satin. A well-known Parisienne beauty thought well enough of this model to use it for several of her evening frocks in different colors. A 36 bust requires 6 5/8 yards of Canton crêpe 40 inches wide. This dress is becoming to ladies 32 to 44 bust.



NEEDLE-ART sent a special representative to Paris to find material for the Winter issue.

Parisian Novelties for you to make

THIS dainty corsage rose which opens to reveal a powder-puff and mirror is but one of the many French ornaments shown in *Winter Needle-Art*. There is a spangled flower that you make of silver sequins, a comb covered with taffeta leaves for evening wear, lace-trimmed garters—dozens of dainty suggestions and instructions for making them all.

The latest fad of the Parisienne

It's the tassel! Tassels are worn on everything—on bracelets, garters, girdles, as pendants, and even on powder jars! Complete instructions for making them and for making the newest French sweaters are given in this remarkable number

Needle- Art

FOR WINTER

On sale at all Butterick Pattern counters; 25 cents a copy